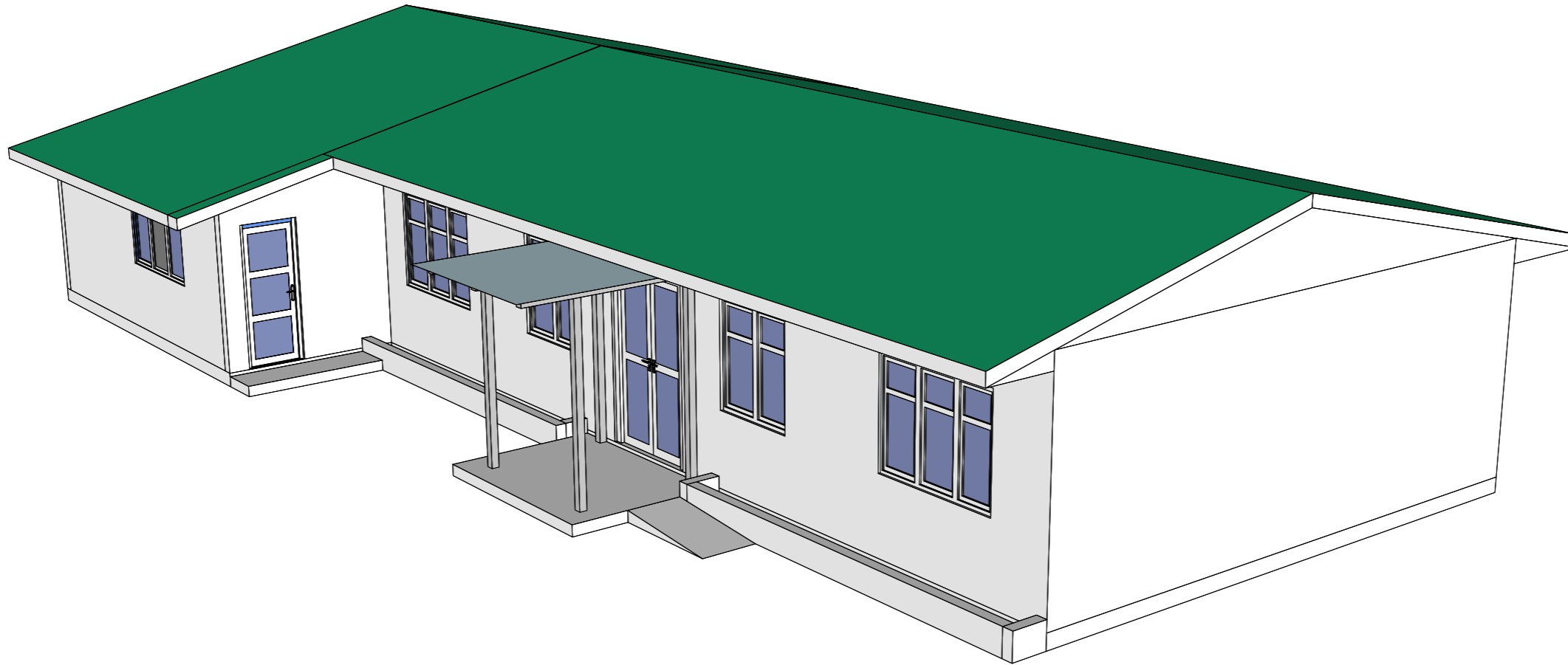




Secretariat of the Uligan Council

HA. Uligan, Rep. of Maldives



Council Idhaaraage Extension Masakkaiy

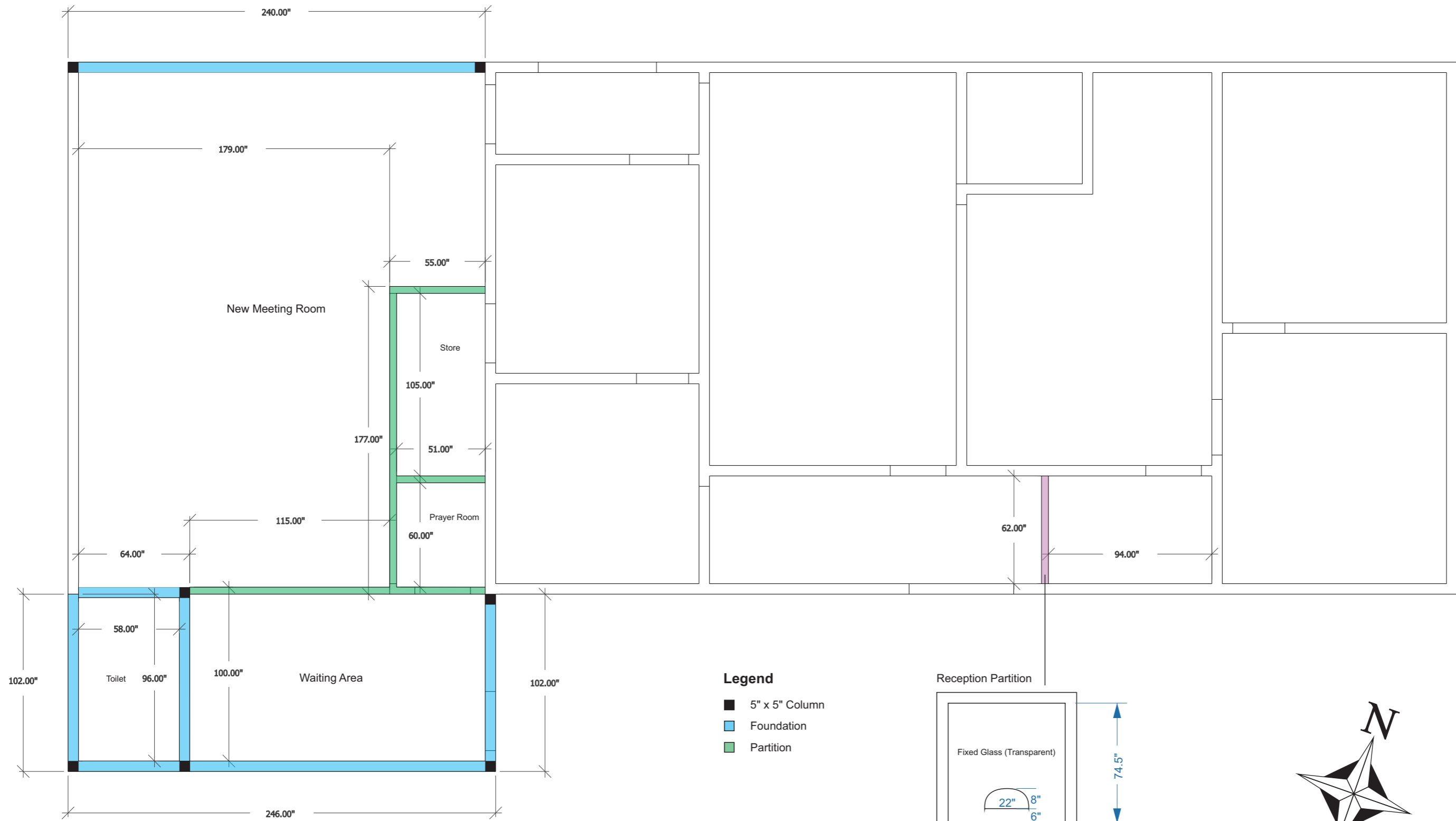
Project Number: PC-245/2024/W-01



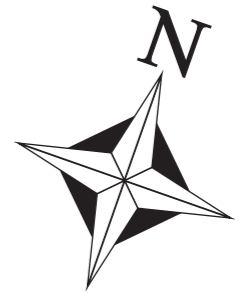
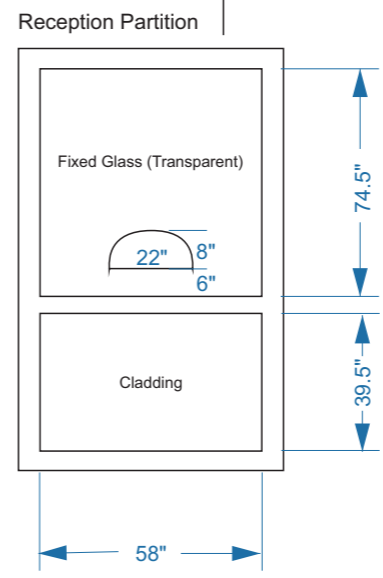
Secretariat of the Uligan Council

Alimagu
HA. Uligan, 01020
6501014, 6500036
projects@uligan.gov.mv

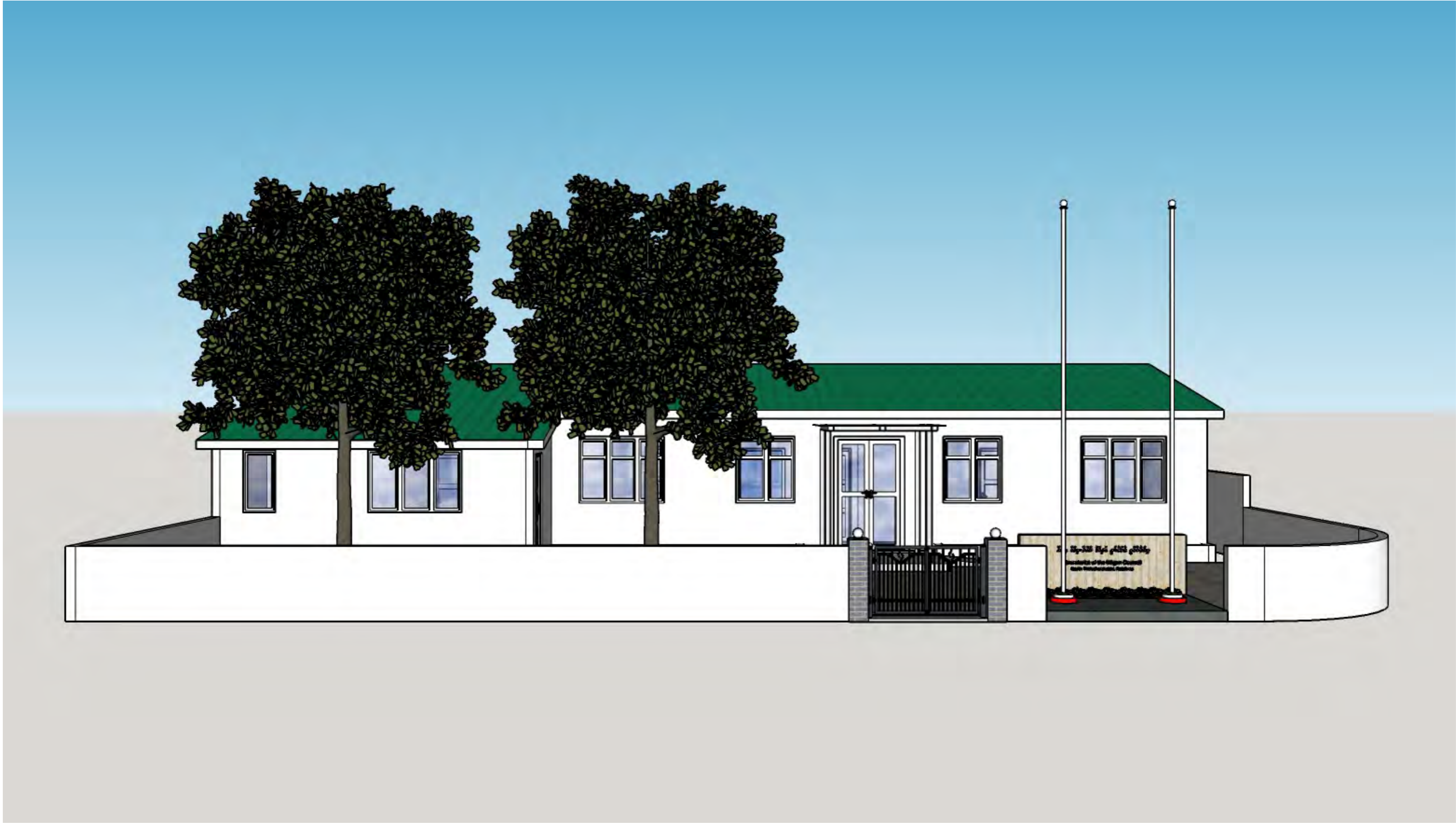
**Council Idhaaraage
Extension
Masakkaiy**



- Legend**
- 5" x 5" Column
 - Foundation
 - Partition

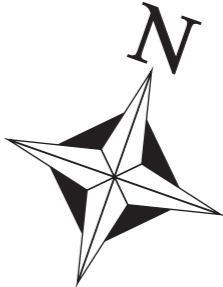


1 FOUNDATION PLAN
Not to Scale



2

FRONT ELAVATION
Not to Scale

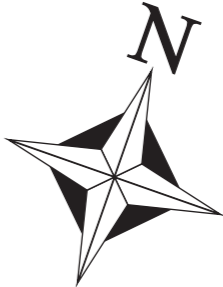




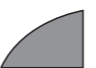

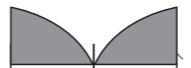






3

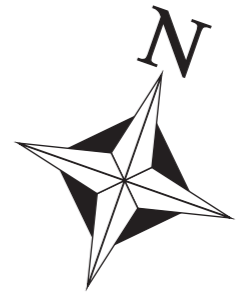
ISOMETRIC ELEVATION

Not to Scale





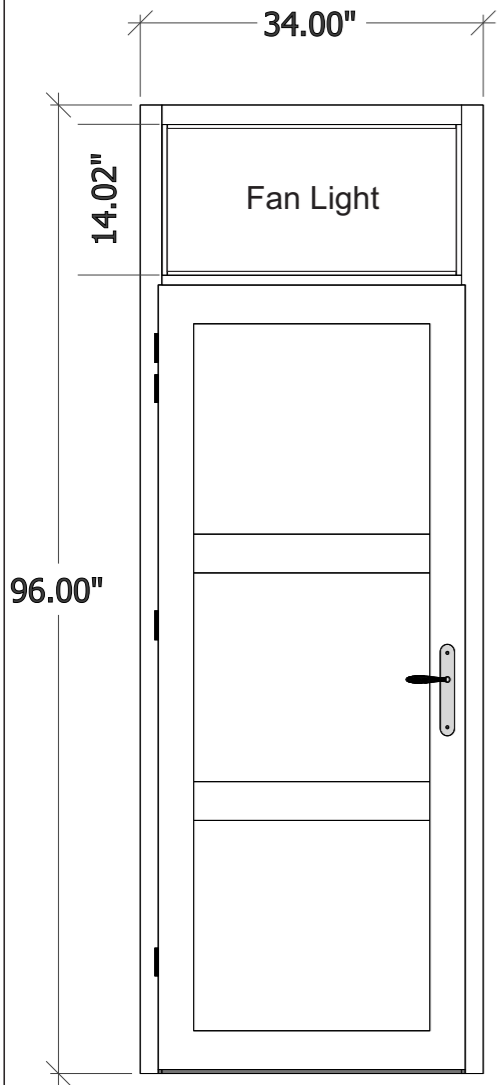
-  Door
-  Sliding Door
-  Double Swing Door
-  Toilet Door
-  Window (Fixed Glass)
-  Three Panels Window
-  Fan Light
-  Two Panels Window
-  Three Panels Window Without Fan Light



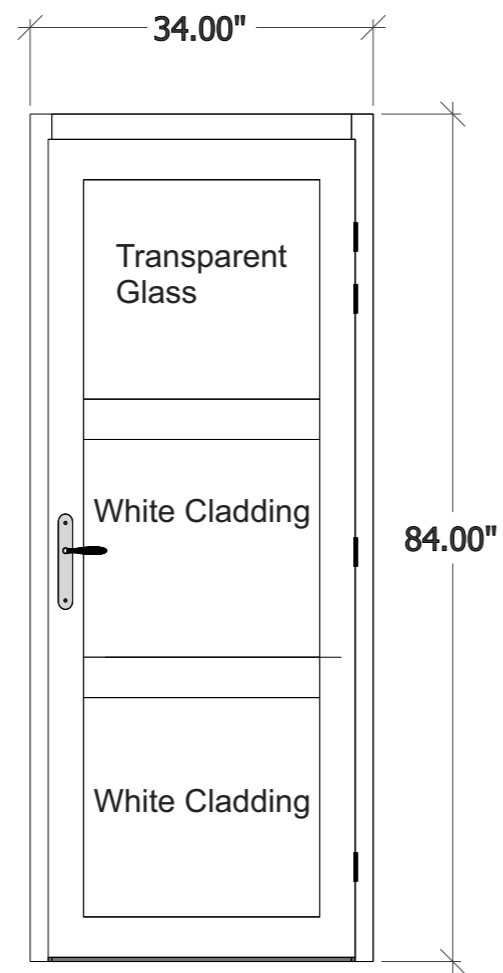
4

FLOOR PLAN
Not to Scale

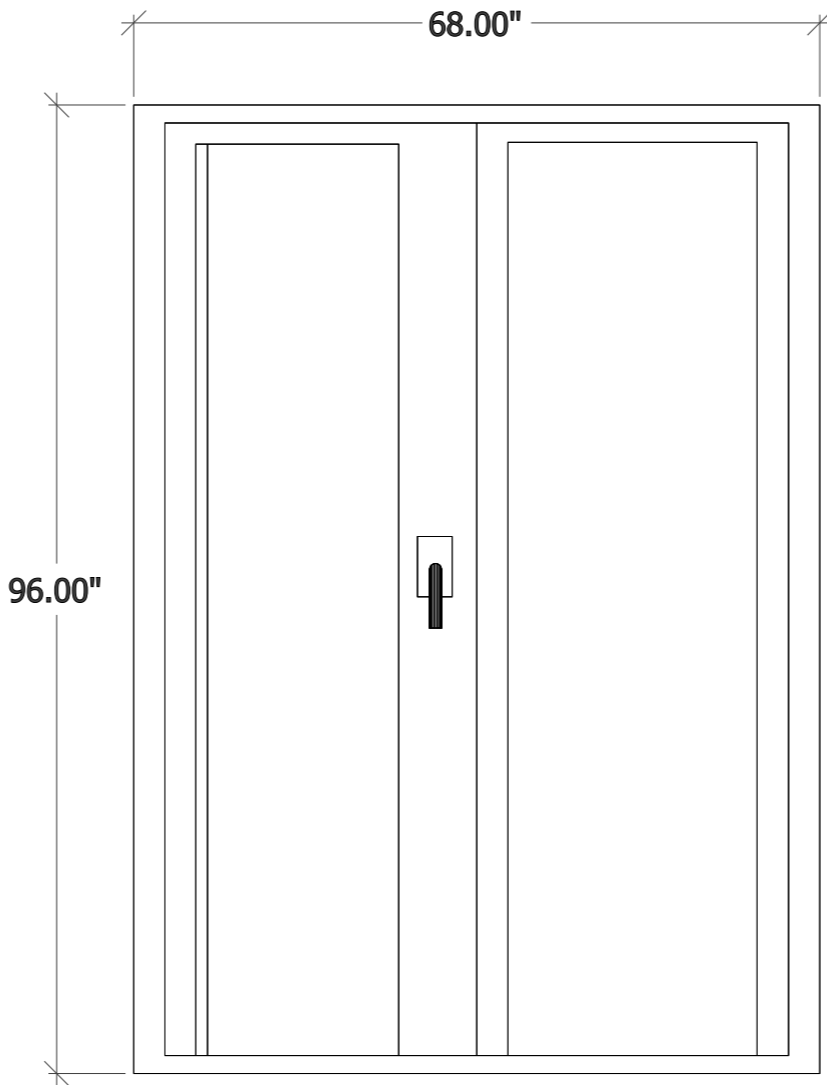
Prayer Room & Store



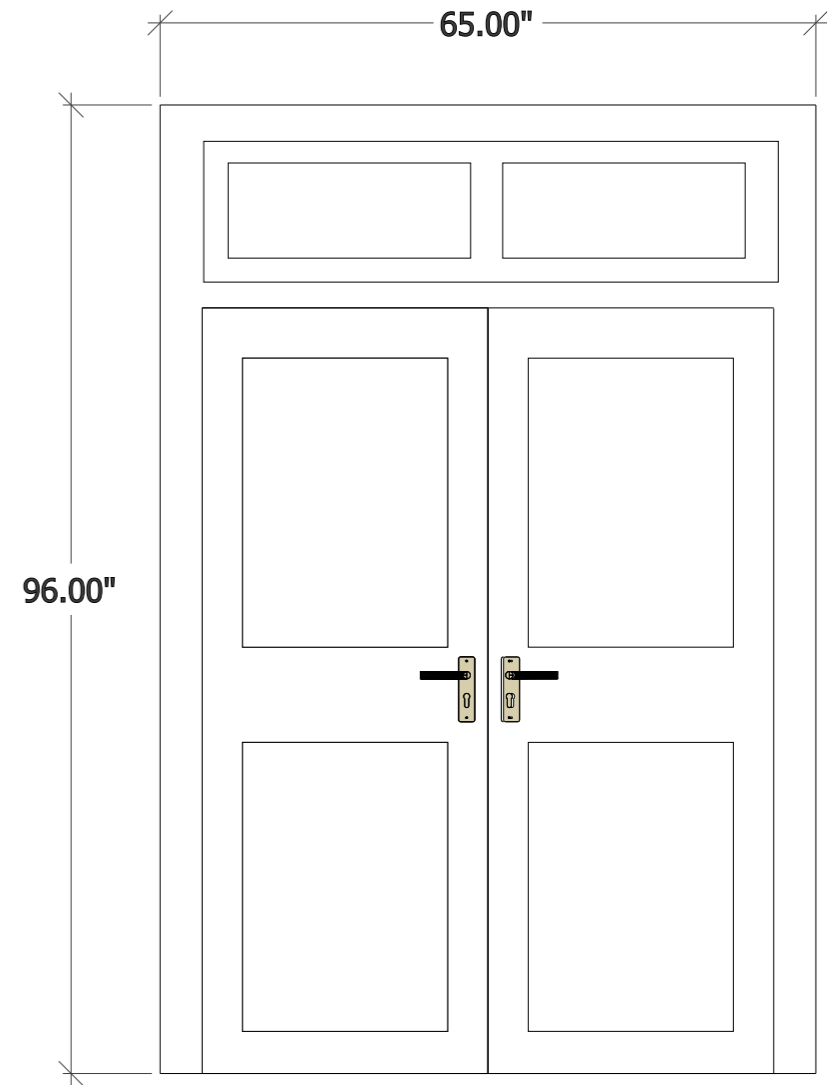
Door



Sliding Door



Double Swing Door



Door with Fan Light (Council Provided)

Frame material is Aluminum White Powder Coated

Frame material is Aluminum White Powder Coated

Frame material is Aluminum White Powder Coated

Frame material is Aluminum White Powder Coated

Panel material is Cladding White

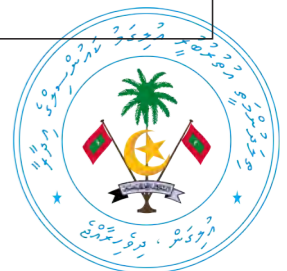
Panel material is Cladding White and Transparent Glass

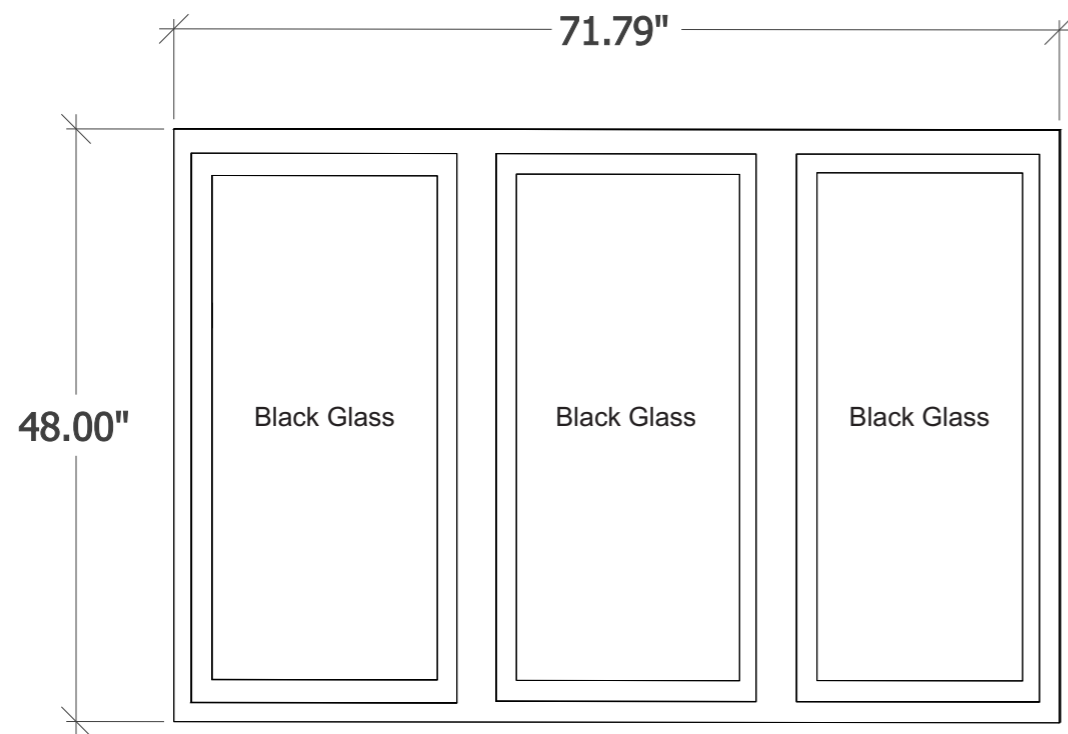
Panel material is Black Glass

Panel material is Black Glass

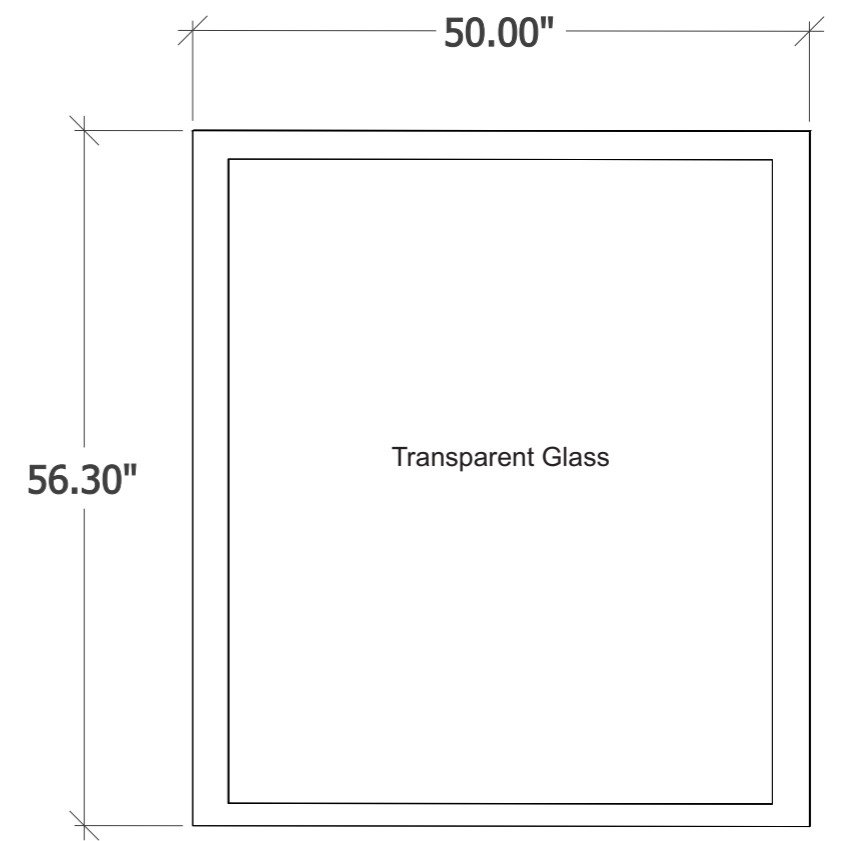
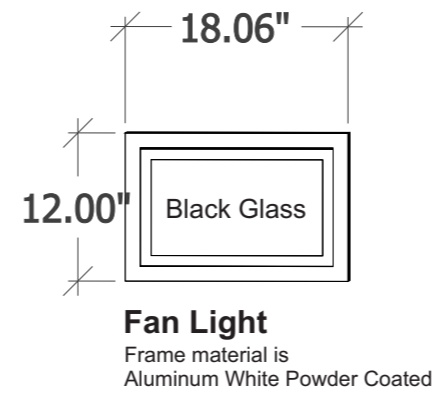
5

DOOR PLAN
Not to Scale

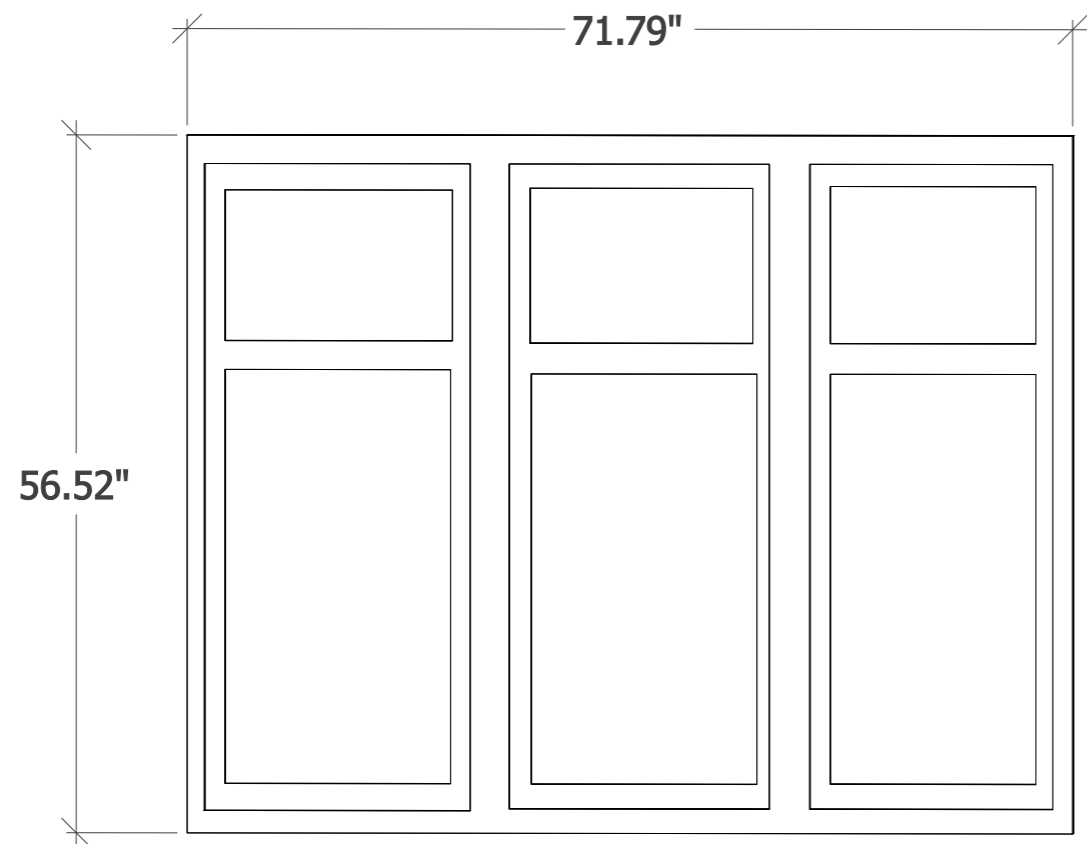




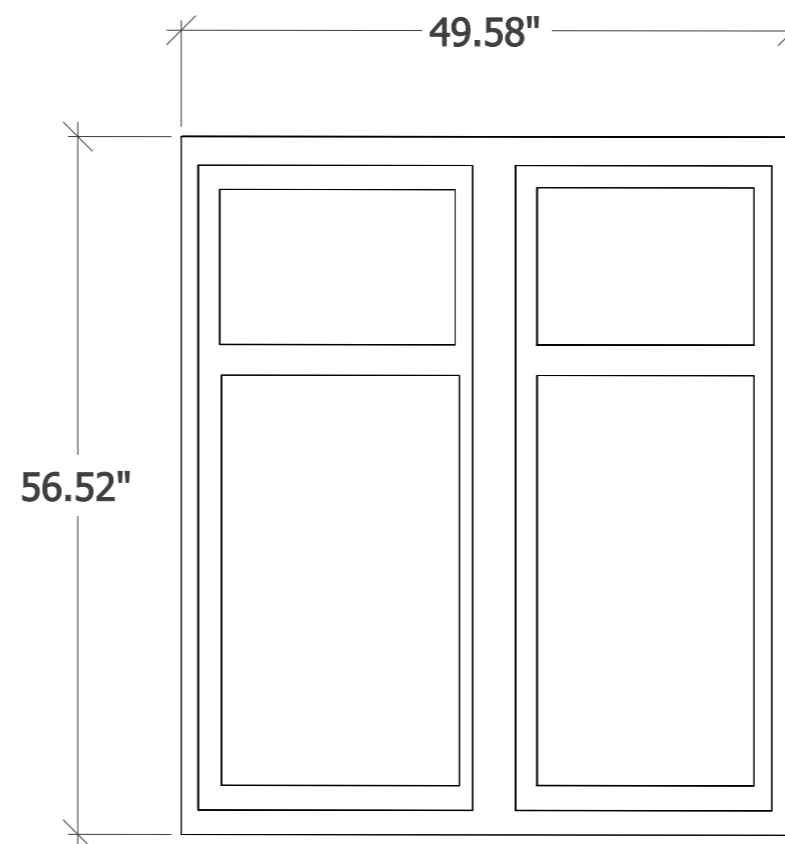
Three Panels Window
Frame material is
Aluminum White Powder Coated



Window (Fixed Transparent Glass)
Frame material is
Aluminum White Powder Coated



Three Panels Window with Fan Light (Council Provided)

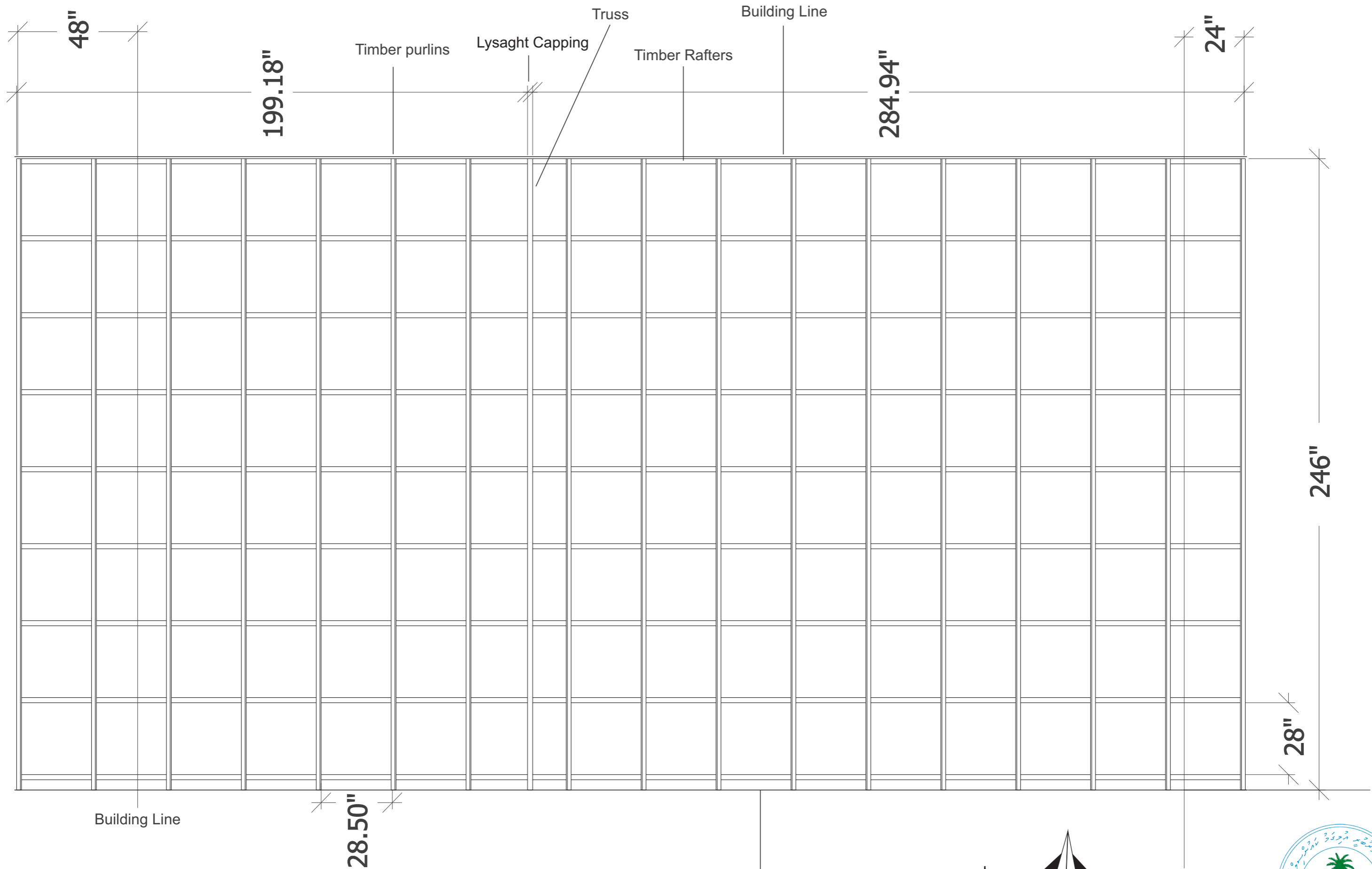


Two Panels Window with Fan Light (Council Provided)

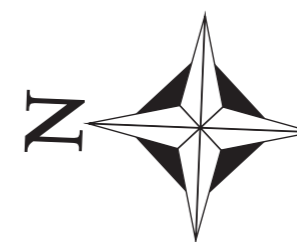
6

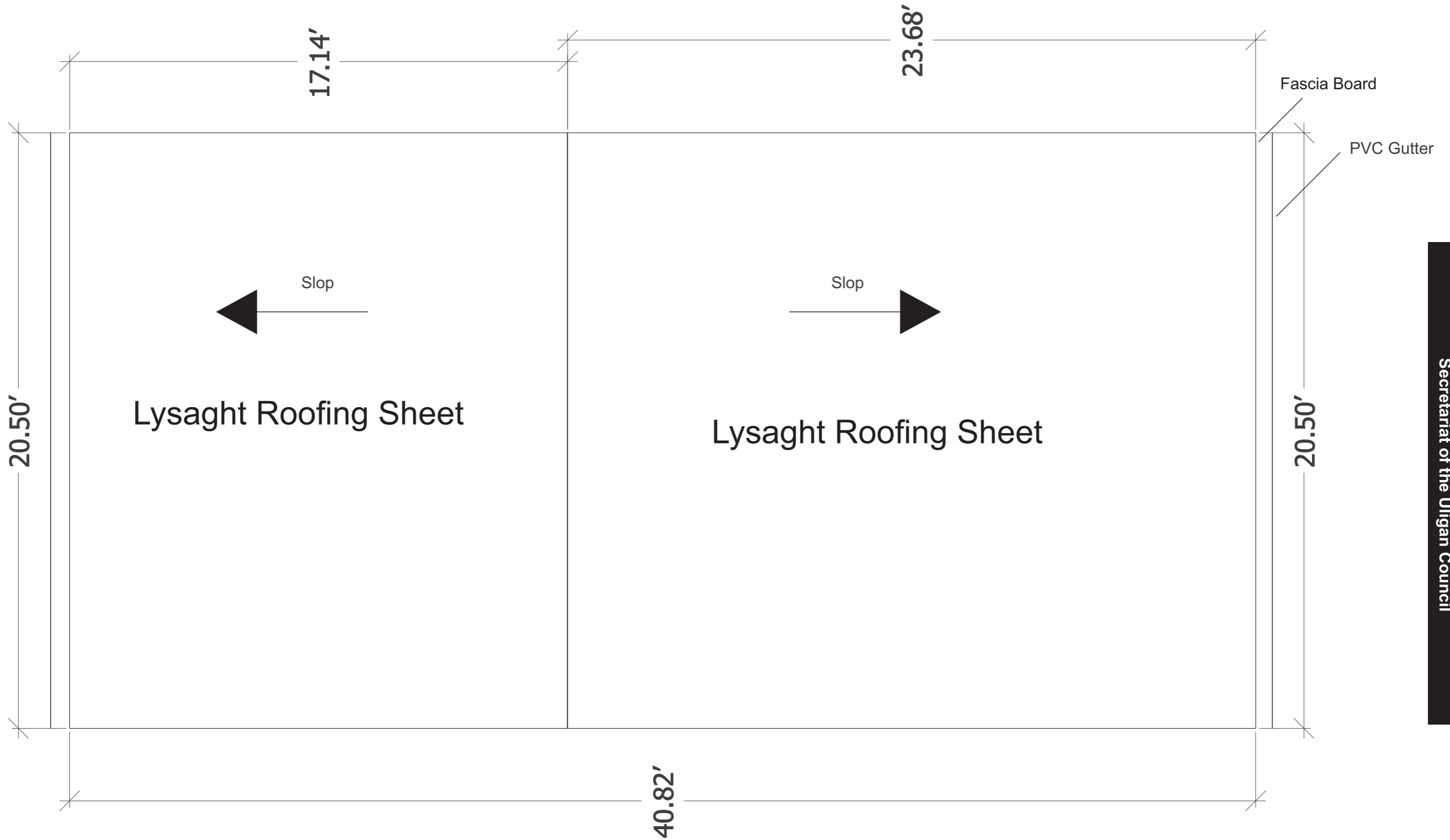
DOOR PLAN
Not to Scale





7 ROOF STRUCTURE
Not to Scale

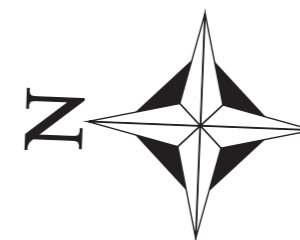




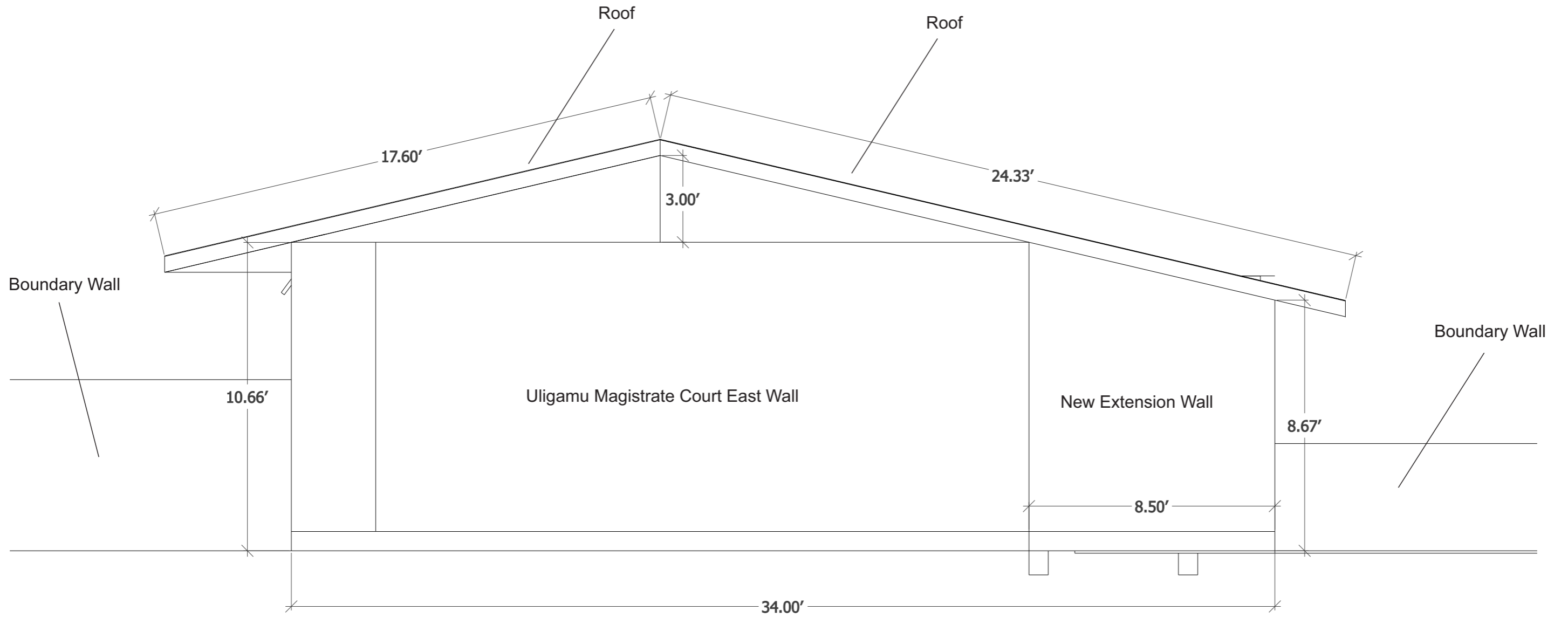
8

ROOFING

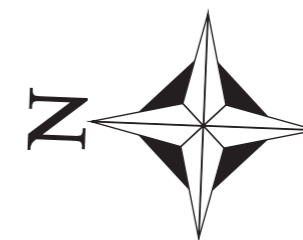
Not to Scale

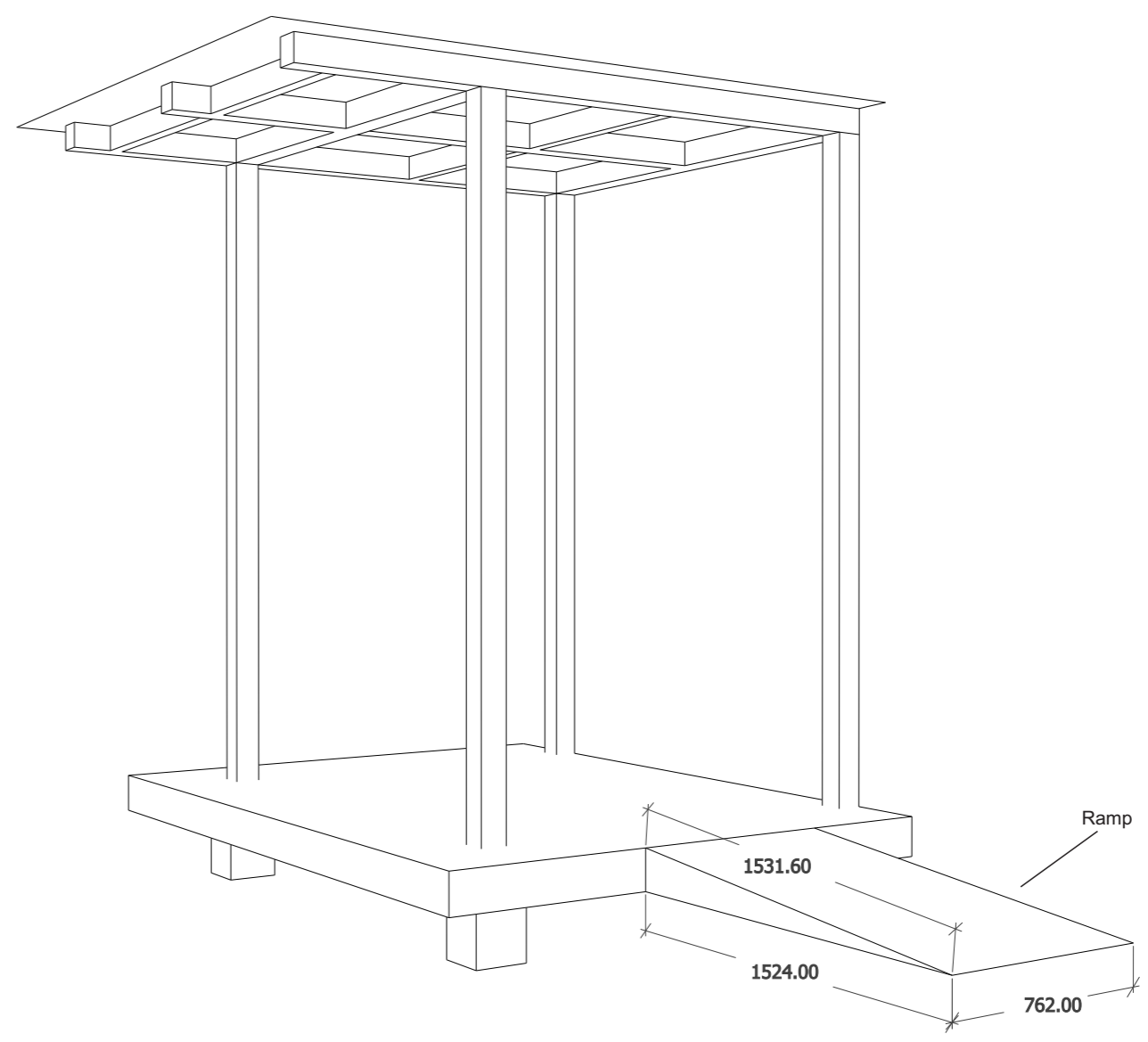
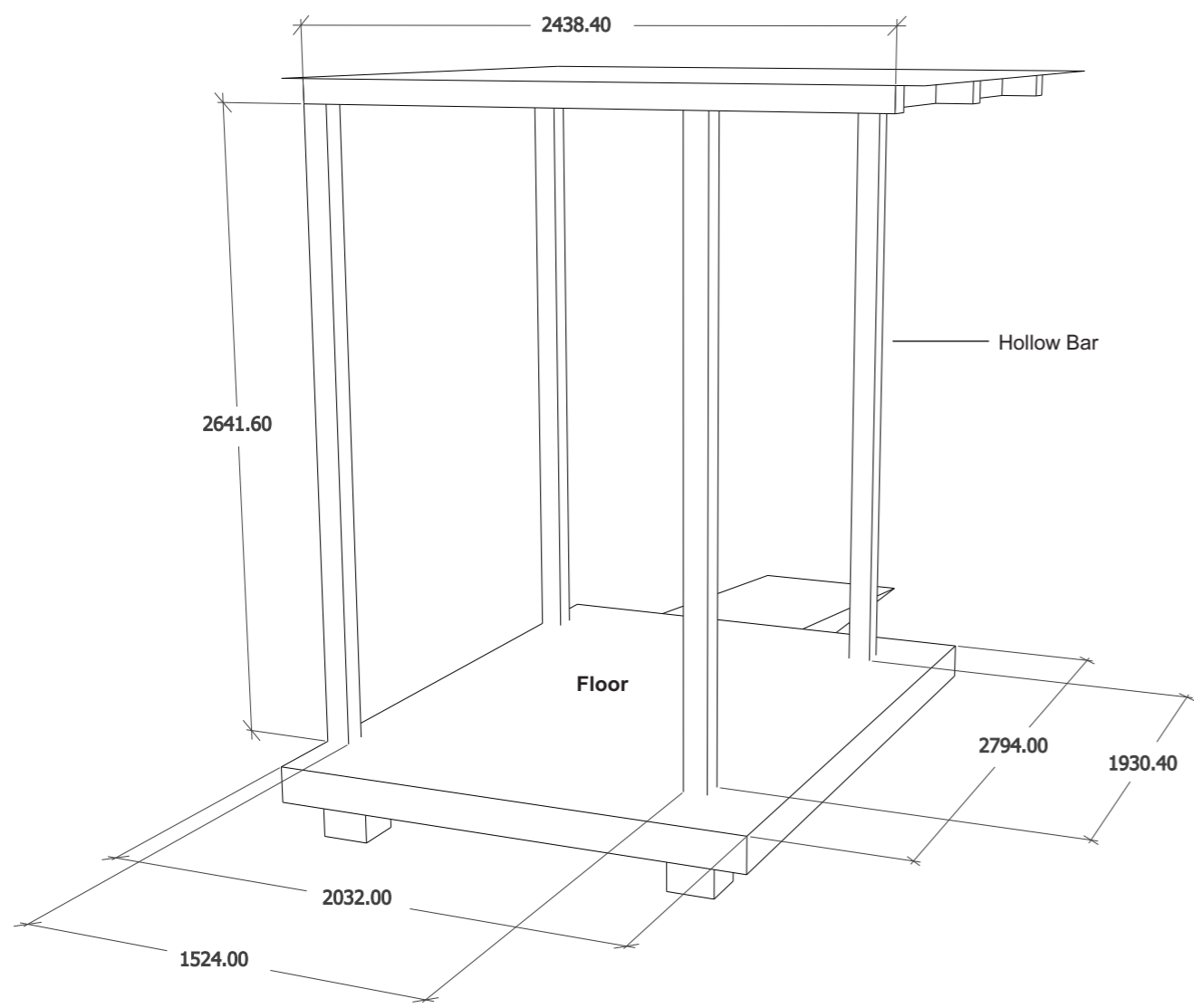


New Extension Building



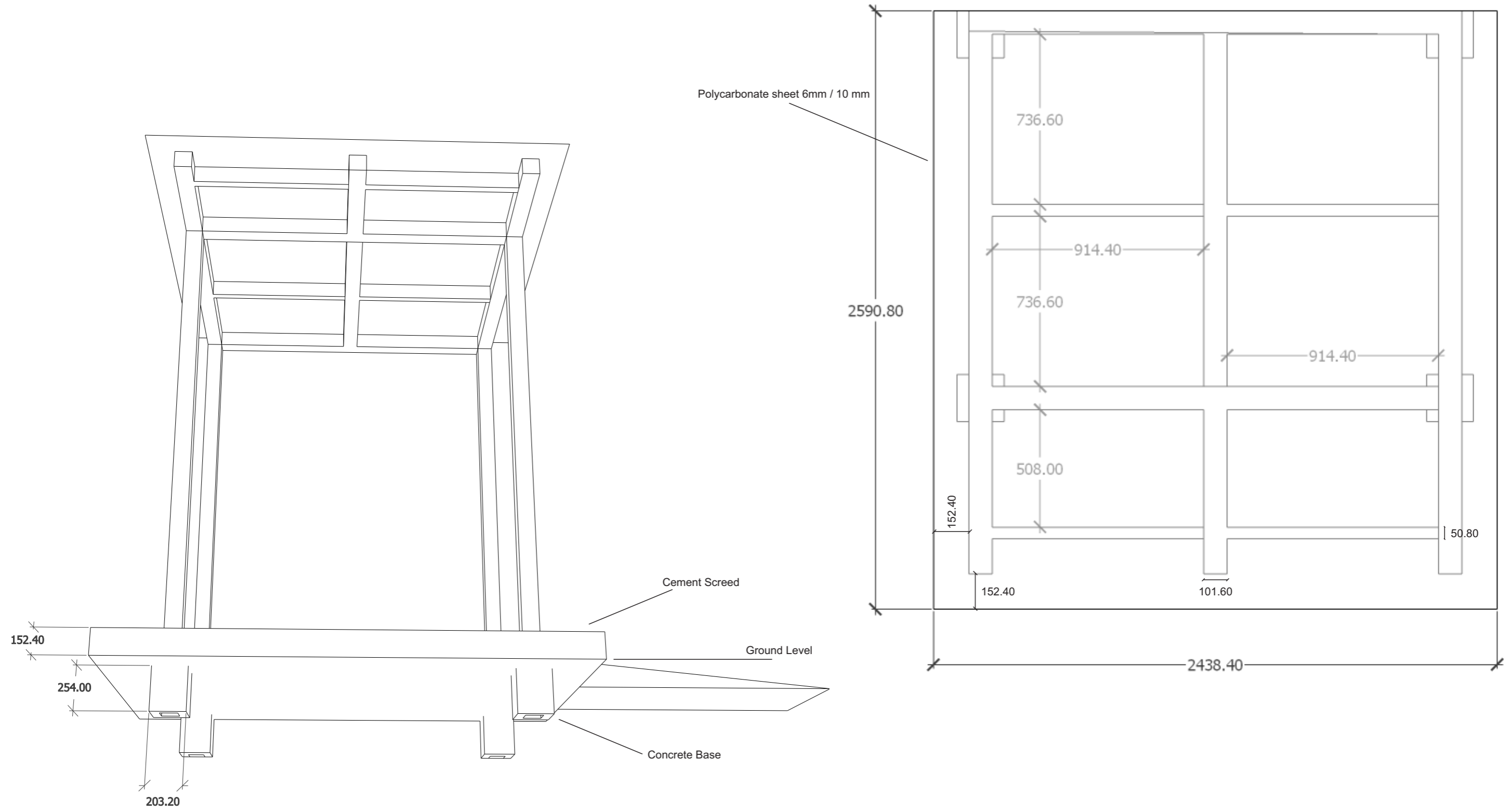
9 BUILDING STRUCTURE
Not to Scale





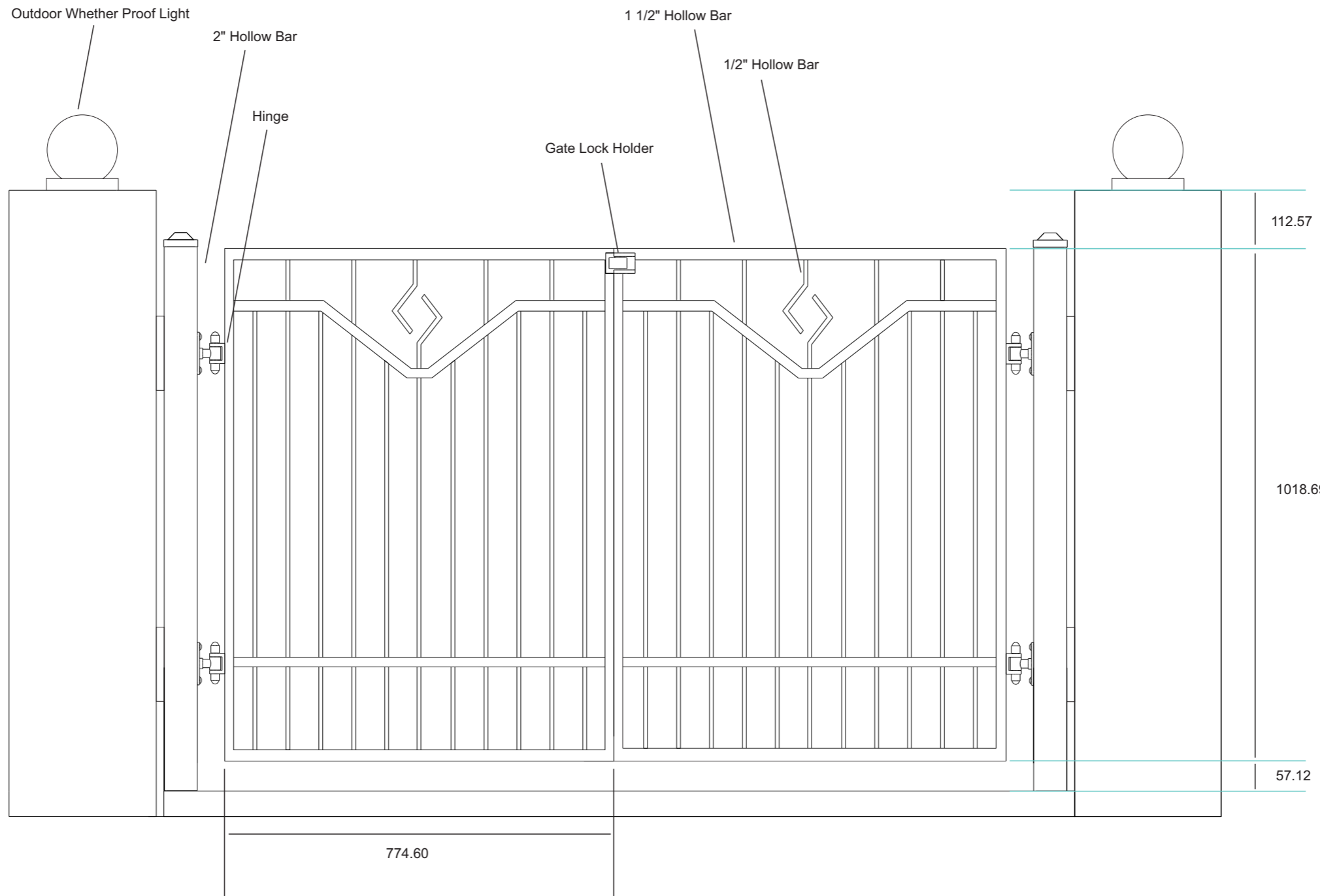
10 **PORTICO STRUCTURE**
All measures in Millimeter (MM)





11 **PORTICO STRUCTURE**
All measures in Millimeter (MM)



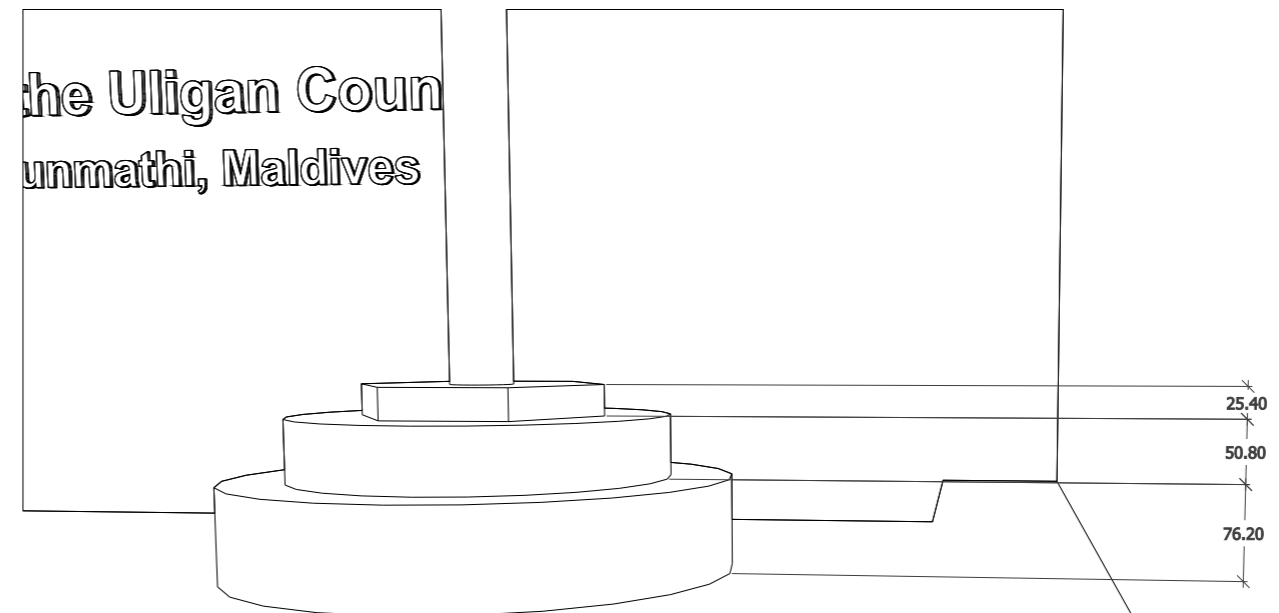
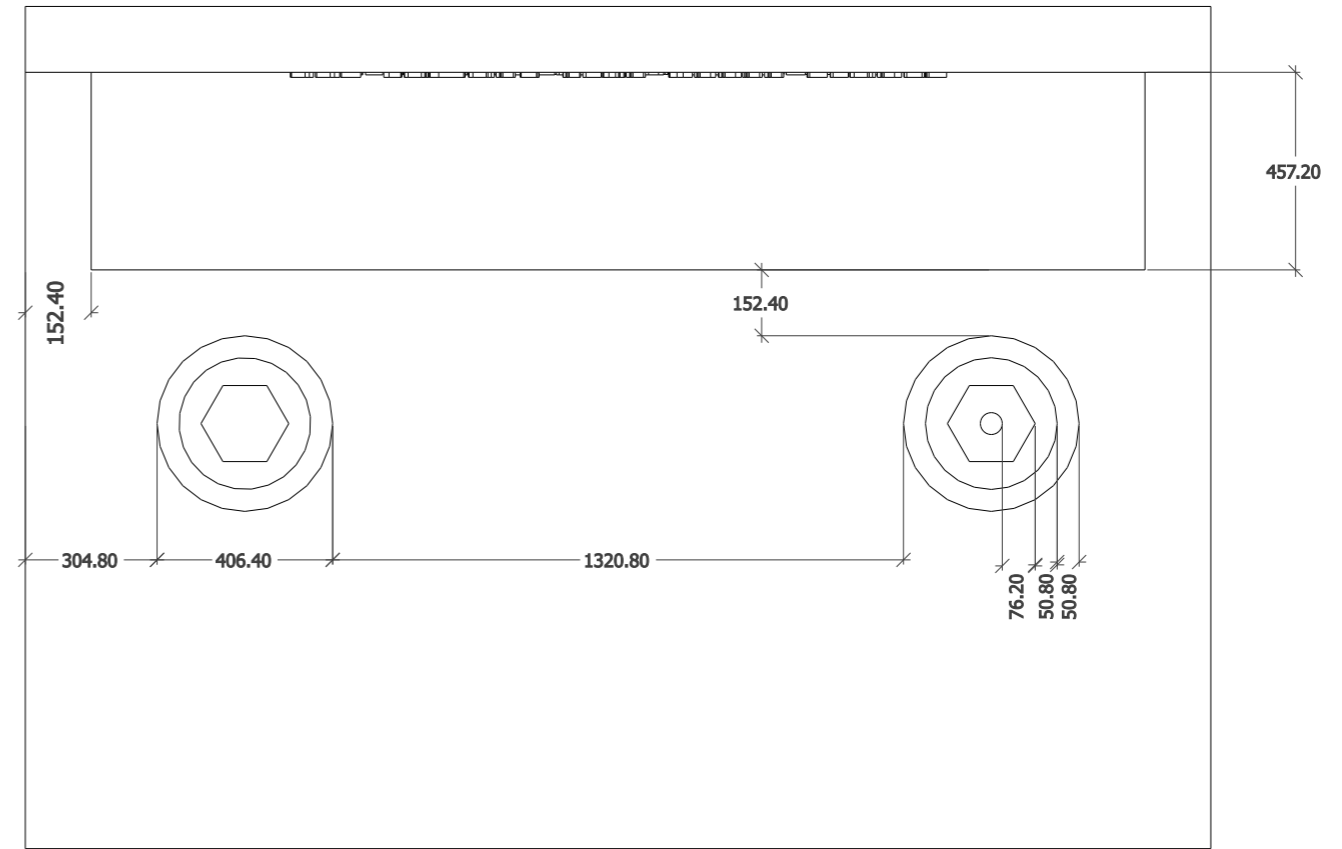
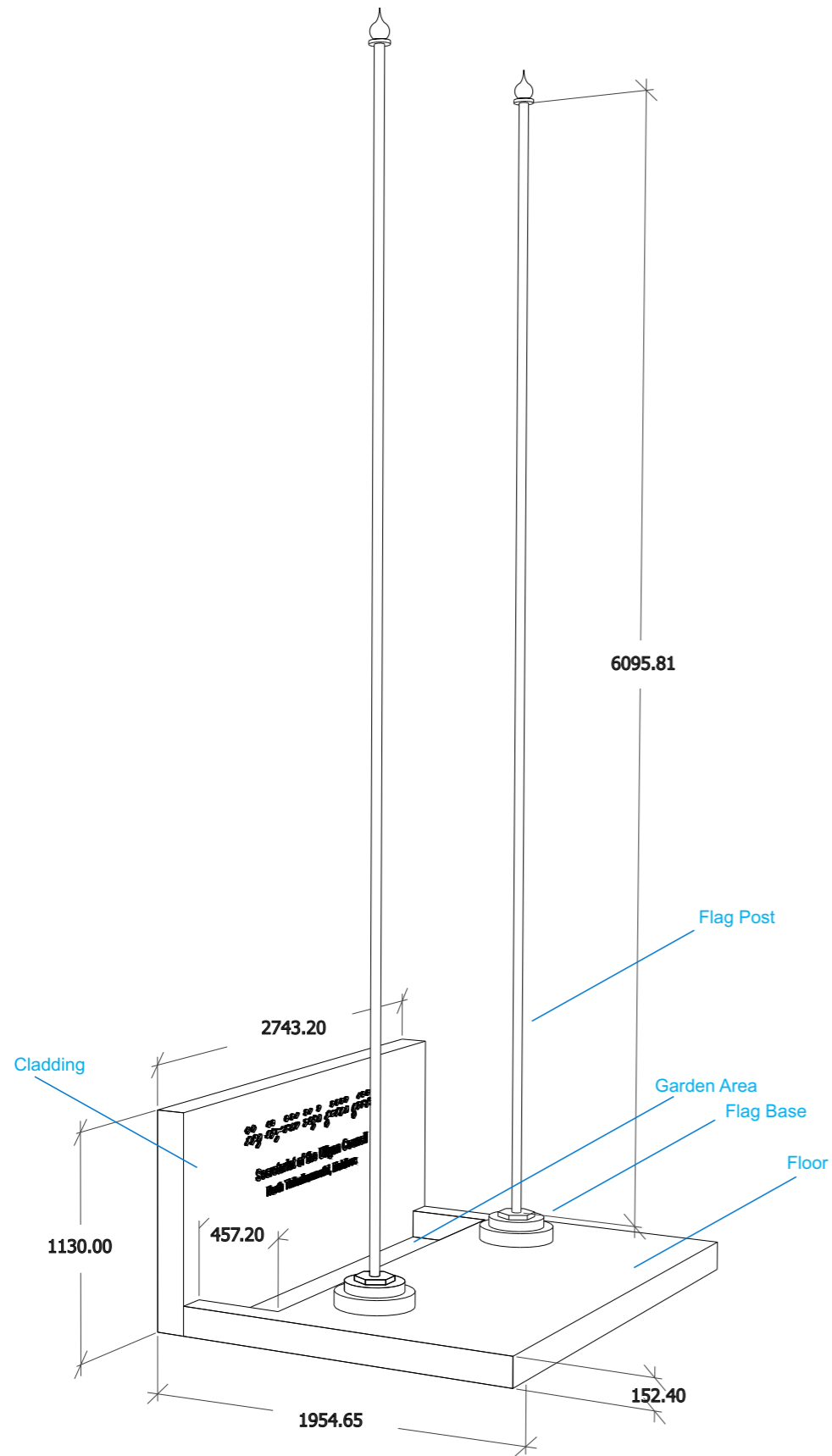


12

GATE

All measures in Millimeter (MM)



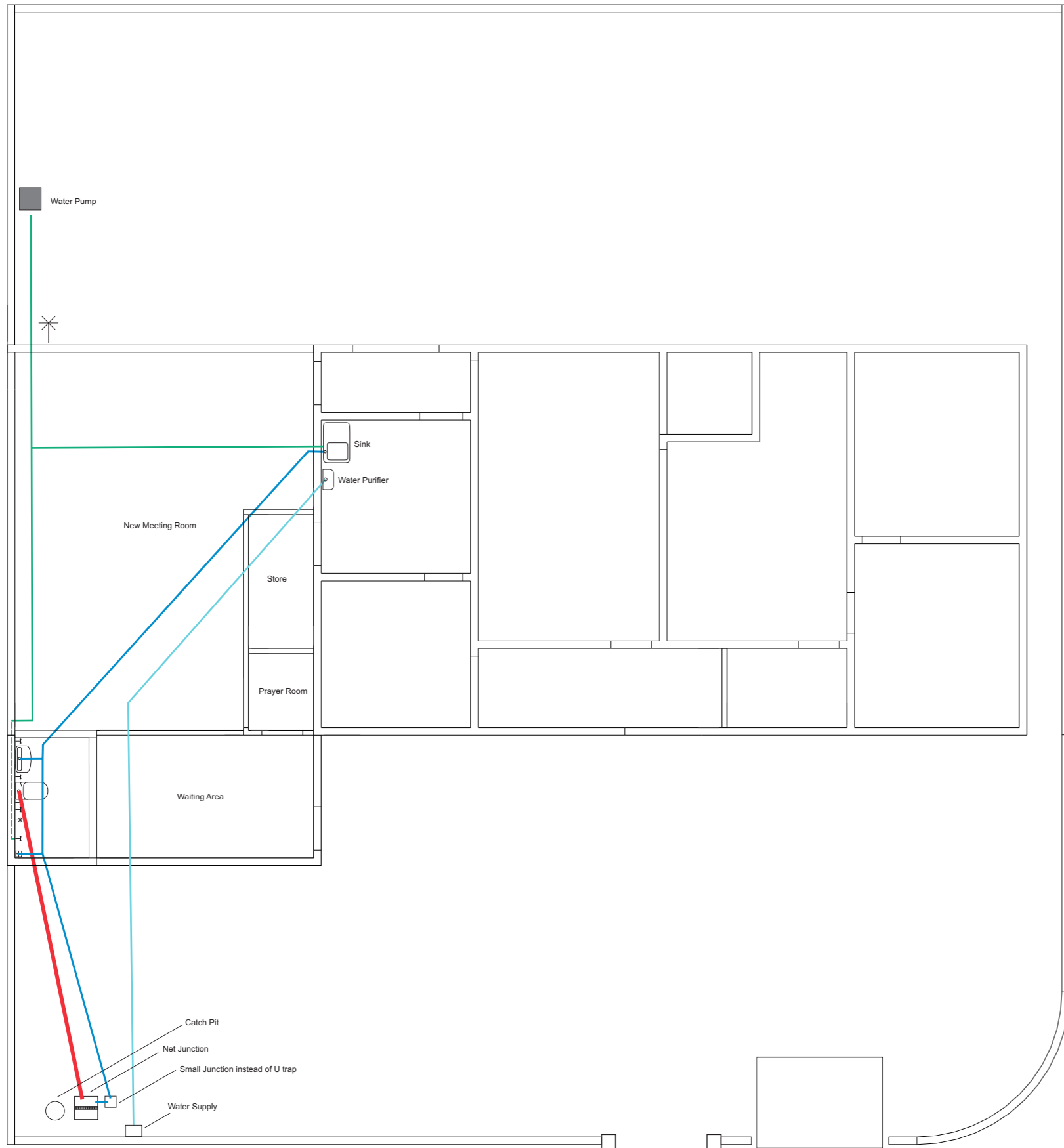


13

FLAG POST

All measures in Millimeter (MM)





Legend

- 4" dia. Sewer Pipe (Class 5 or Higher)
- 3" dia. Sewer Pipe (Class 5 or Higher)
- 1" dia. Well Water Pipe (Higher Pressure)
- 1" dia. Water Supply Pipe (Higher Pressure)
- - - 1/2" dia. Well Water Pipe (Higher Pressure)
- 1/2" dia. Stop Valve
- 1/2" dia. Water Tap
- 3" Floor Water Trap

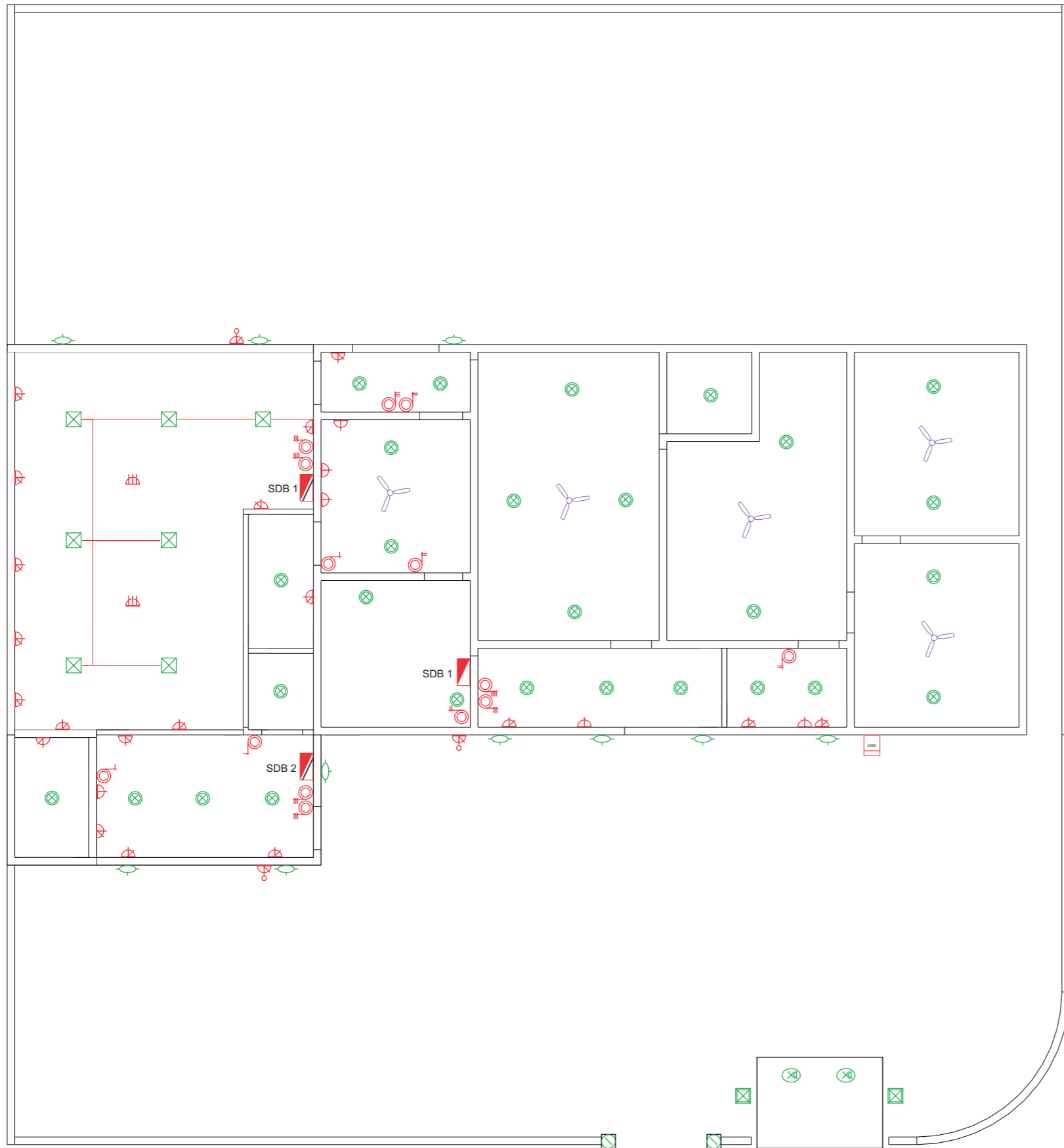


14



















PLUMBING LAYOUT

Not to Scale

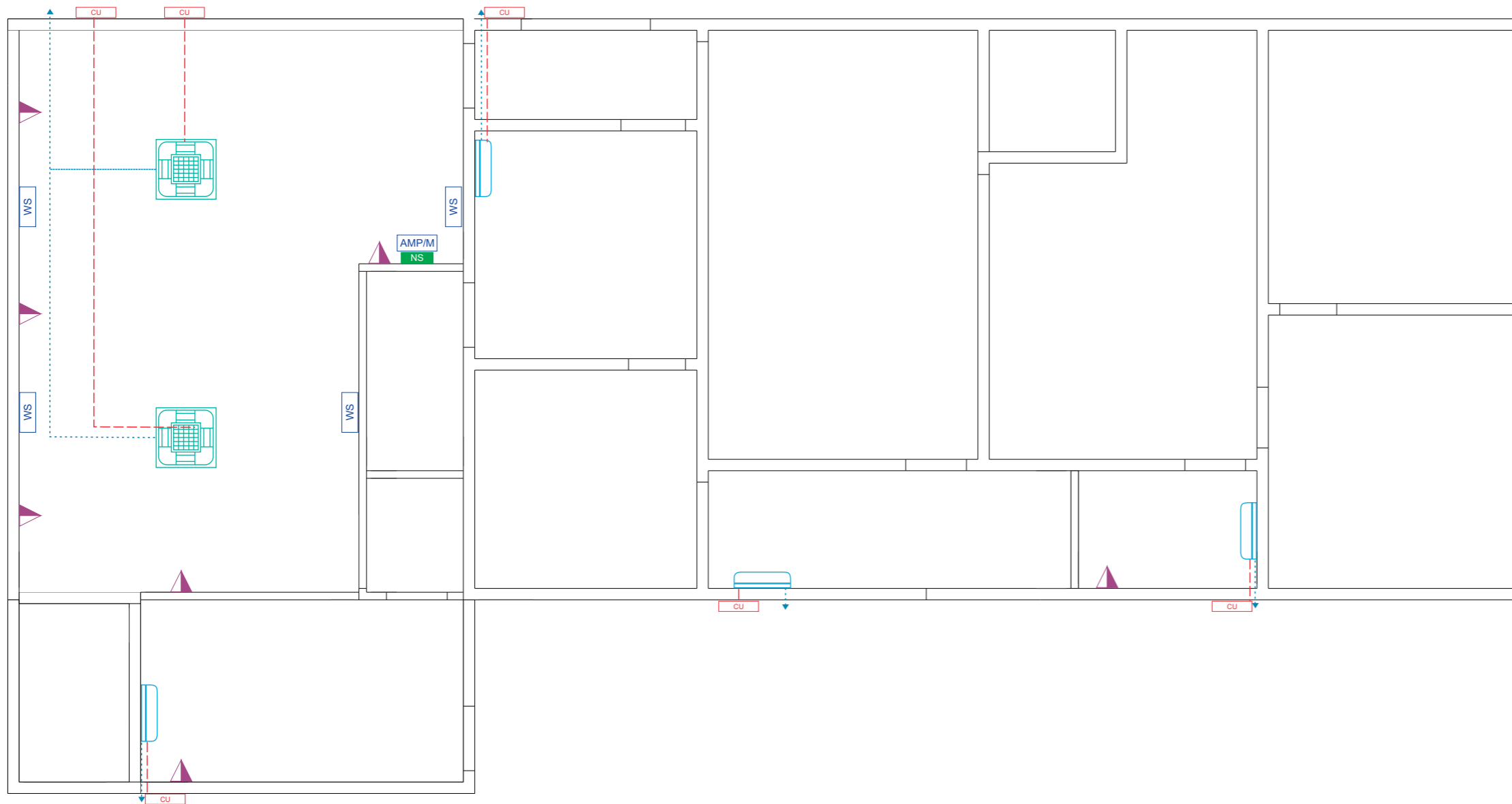














Legend

-  Ceiling Mounted Surface Round LED Panel Light 22W
-  Ceiling Mounted Rectangular LED Panel Light 24" 80-85W
-  Wall Mounted Outdoor Weatherproof 22W Bulb
-  Outdoor In-Ground warm LED Light 22W
-  Underground Spot Light 3W warm white
-  Outdoor Wall Mounted Gate LED Light 22W
-  House Hour Meter 3 Phase
-  Flush Mounted Distribution Box
-  Wall Mounted Distribution Box
-  Socket Outlet 13A (Single Gang switch in 2 Gangs Link Mounting Box)
-  Socket Outlet 15A @ High Level
-  Socket Outlet 13A Universal (Floor Mounted)
-  Single Socket Outlet 13A Universal Waterproof
-  Single Gang Switch
-  2 Gang Switch
-  3 Gang Switch
-  4 Gang Switch
-  Ceiling Fan

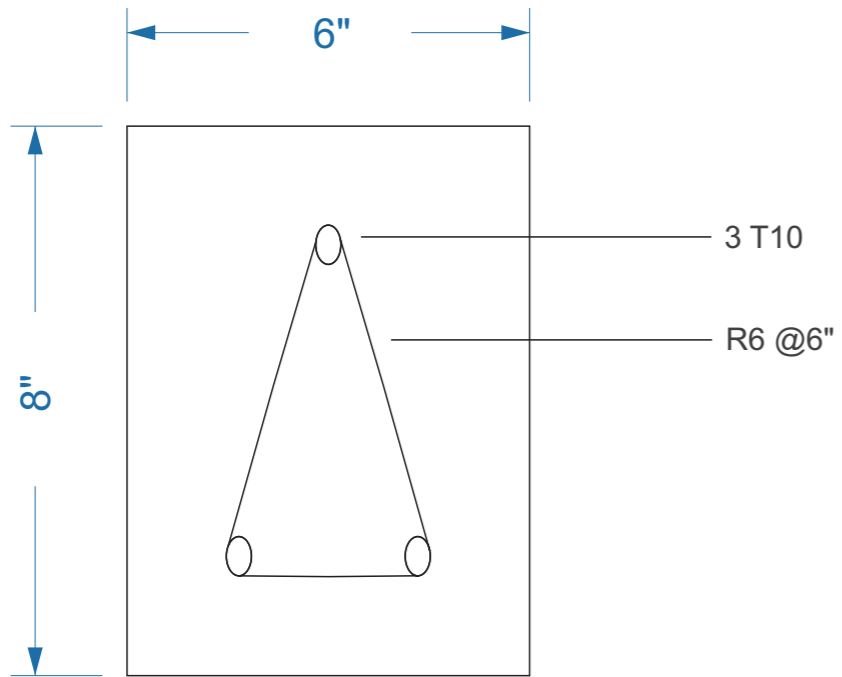




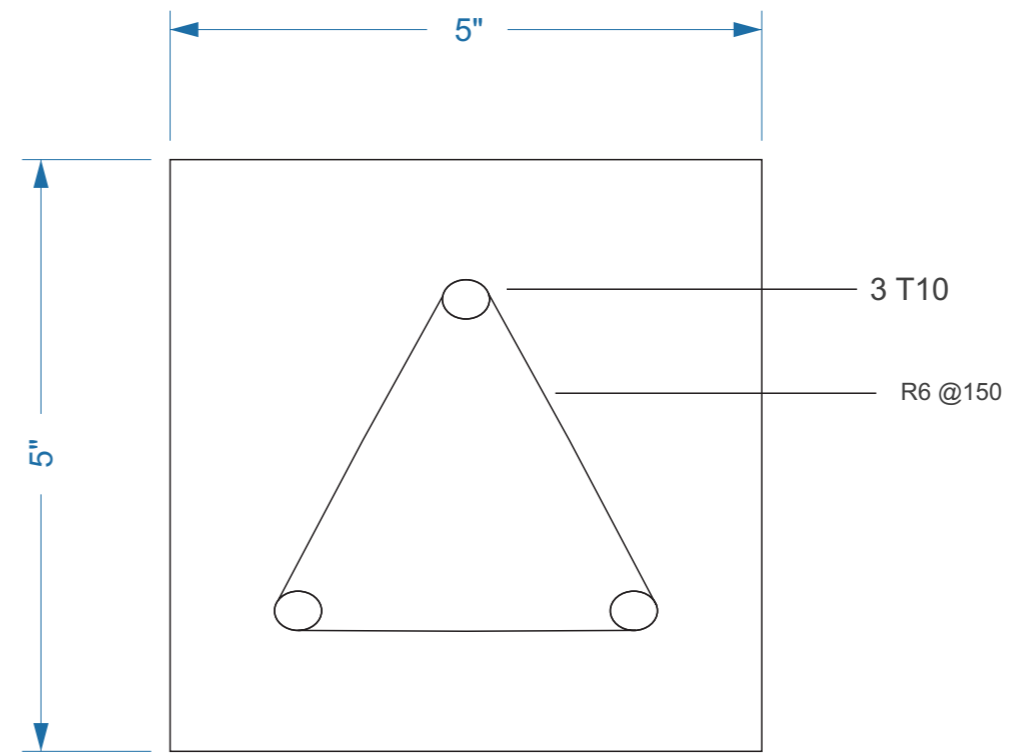
Legend

-  4-Way Cassette Air Conditioner
-  Wall mounted Air Conditioner
-  Outdoor Condensing Unit
-  Refrigerant Pipes
-  25.dia. Condensate Drain Pipe
-  40.dia. Condensate Drain Riser Pipe
-  Computer Network Outlet
-  Network Switch
-  Wall Mounted Speaker @ High Level
-  Amplifier & Sound Mixer



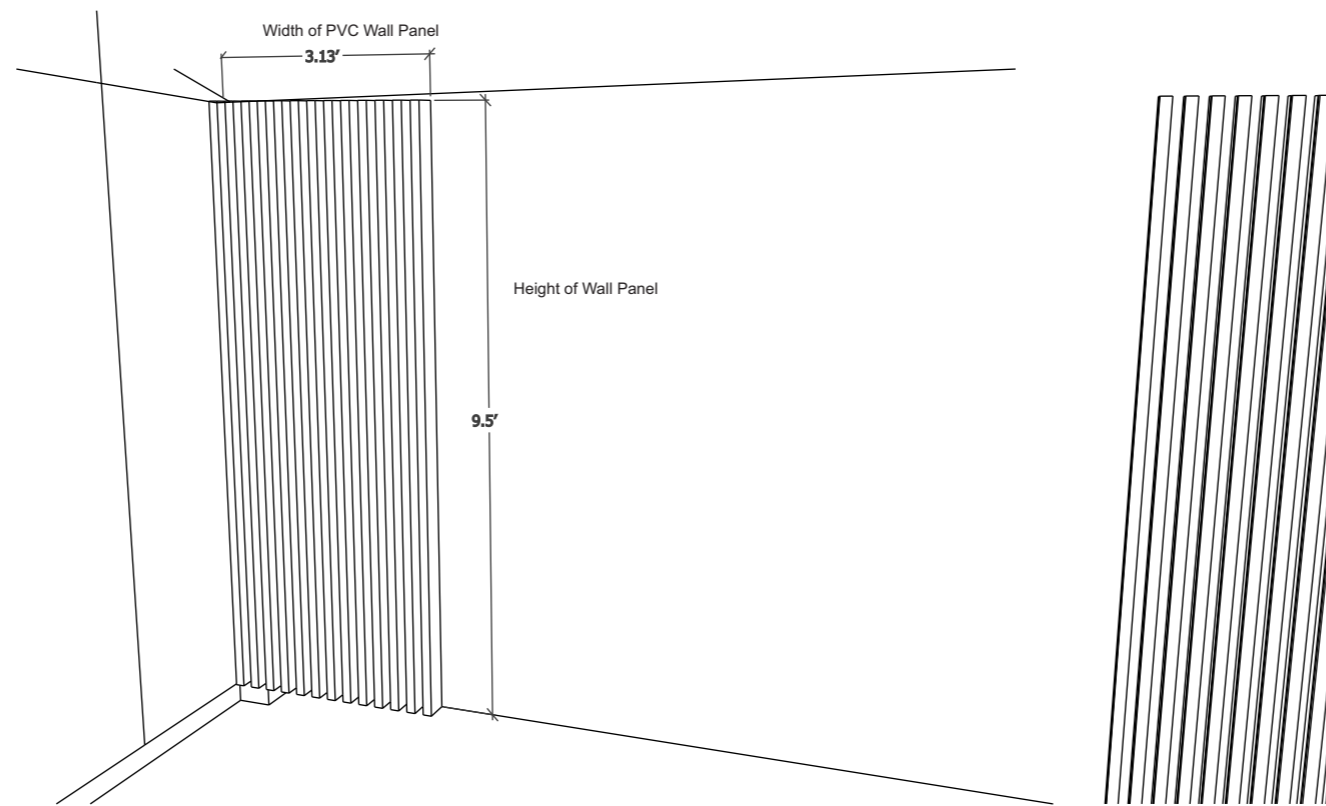
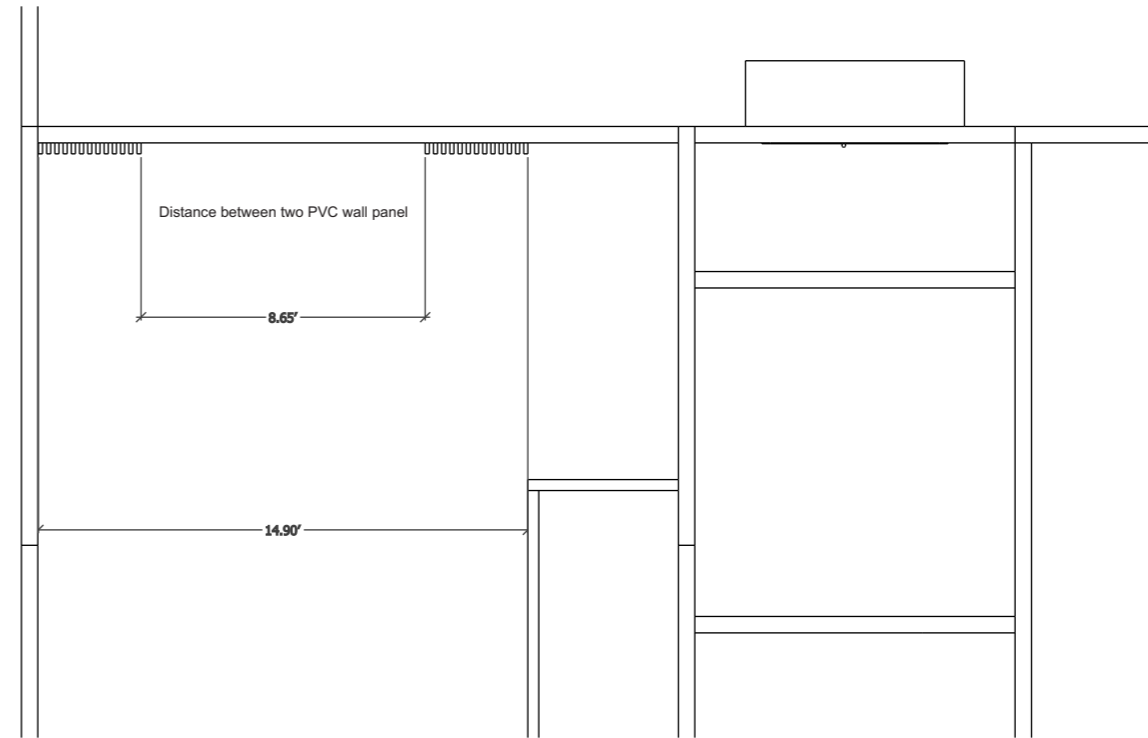
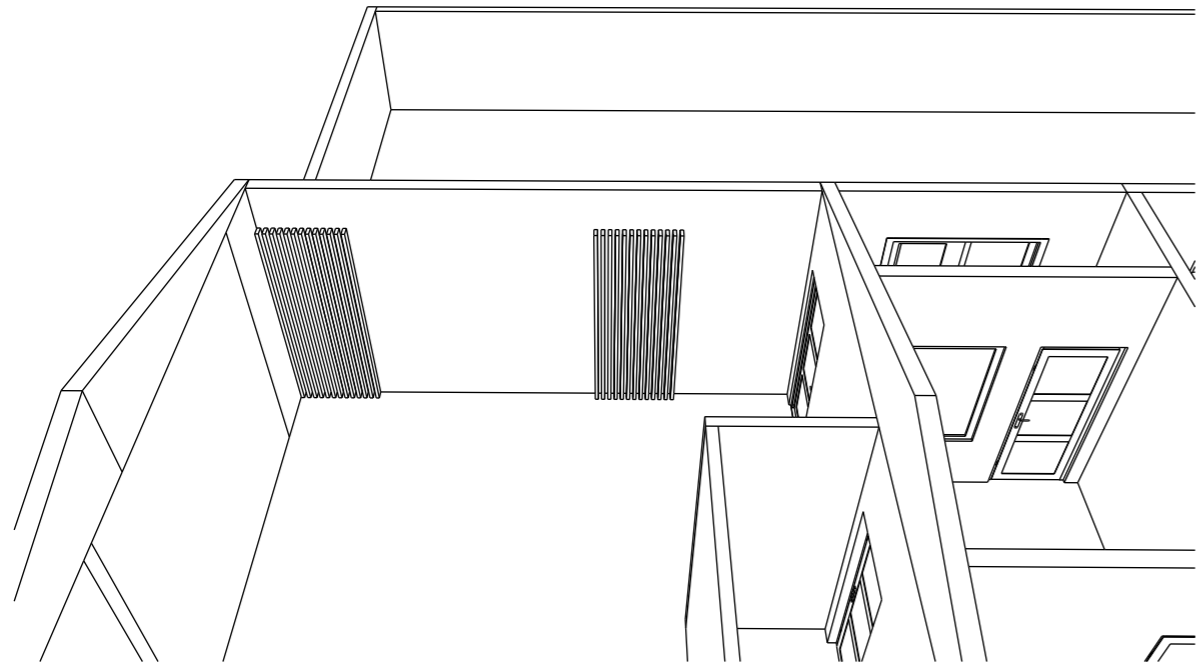


FOUNDATION BEAM / LINTEL BEAM



COLUMN 5" x 5"



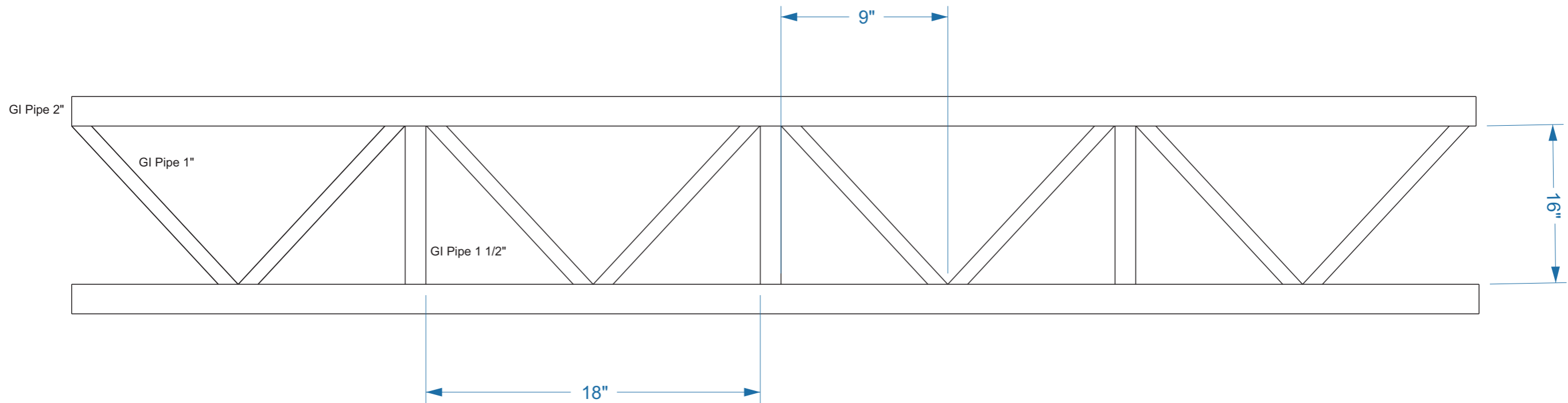


18

DECORATION DETAILS

Not to Scale





19

ROOF TRUSS STRUCTURAL
Not to Scale

